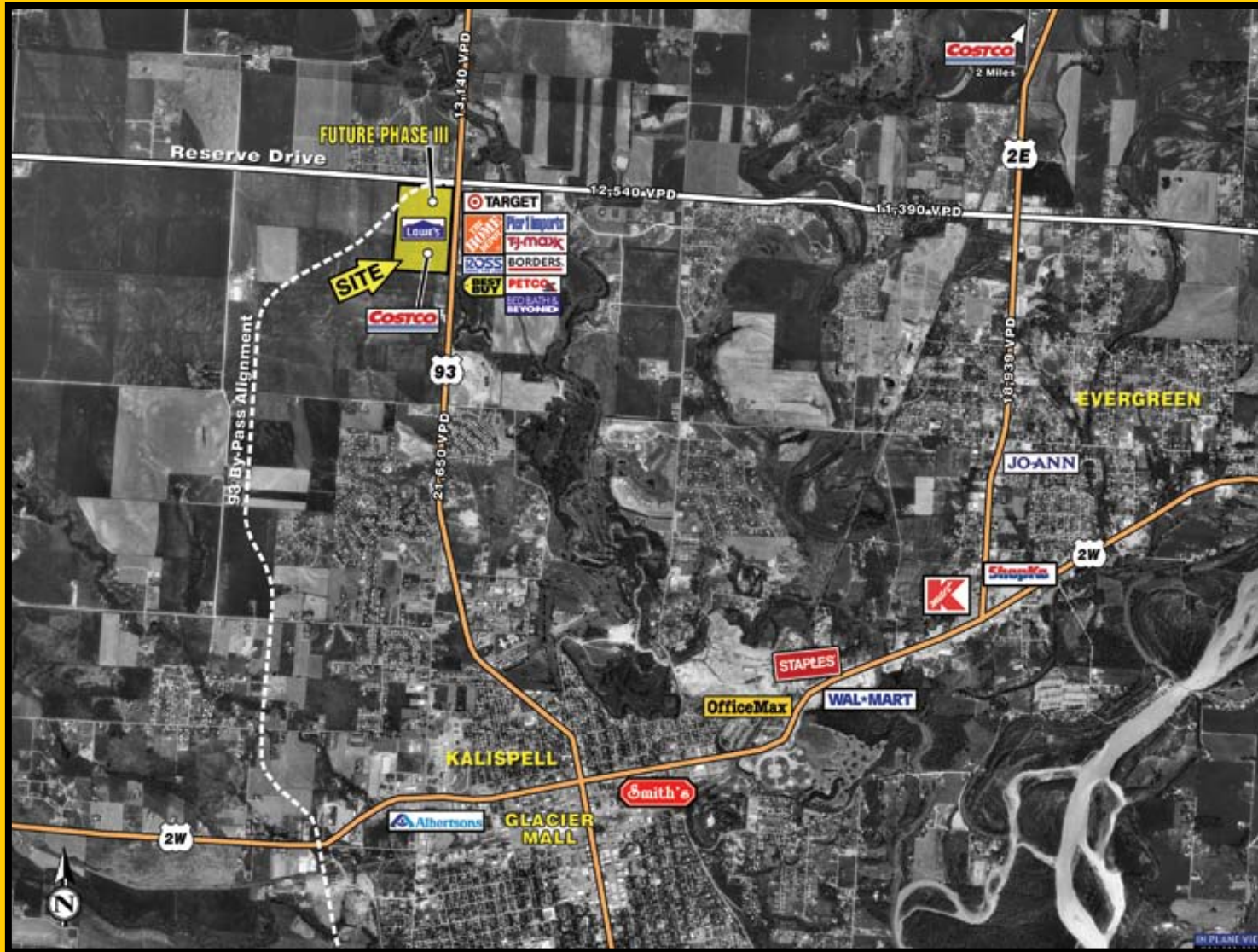


KALISPELL MONTANA

Highway 93
&
Reserve



Spring Prairie Center Vicinity

GOLDBERG

PROPERTIES, INC.

Information contained herein, while not guaranteed, is from sources we believe reliable. Price, terms and information subject to change. Goldberg Properties, Inc, its broker associates and salespersons are or will be acting as agents of the seller/lessor with the duty to represent the interests of the seller/lessor. Goldberg Properties, Inc. will not act as your agent unless an agency agreement is signed and in effect.

195 West 12th Avenue • Denver, CO 80204 • 303.759.8000 • fax 303.863.0275 • goldbergprop.com

GOLDBERG PROPERTIES



SPRING PRAIRIE PHASE III

KALISPELL, MONTANA



SPRING PRAIRIE PHASE III

KALISPELL, MONTANA

Anchors:

Lowe's
Costco
Kohl's
PetSmart

Size:

45 acres

GLA:

450,000 sq. ft.
The site serves the greater Flathead Valley Market of approximately 125,000.

Kalispell is the largest market in Western Montana, and for three years has been the fastest growing residential market in the state.

Spring
Prairie
Center